

ALERT DISASTER CONTROL

Global Emergency Response and Integrated Risk Management Solutions



APOLLO™ PORTABLE MONITOR

Akron® Apollo Monitors offer a variety of models with features to fit the ever increasing demands of the fire service for a more durable, more dependable and more stable monitor.

- 360° rotation when mounted in the deck mode, 180° in the portable mode
- Vertical travel from 90° above to 15° below horizontal with built-in 35° safety stop
- 3.0" waterway with cast-in turning vanes for more efficient flow
- Sturdy ground base with folding legs for easy storage
- Direct mount - A combination 3.0" NPT female and 3.0" flange
- Built-in pressure gauge
- NEW Carbide Spikes for extended wear
- Thread inlets optional in NST, BSP or NPT



These features and more make the Apollo the - Monitor of Choice - by users who need added stability and more reliable performance.

APOLLO SINGLE INLET MONITORS

Flows up to 1,250-gpm (4,800-lt/m) in the deck mode and 1,000-gpm (3,800-lt/m) in the portable mode.

Choice of ground bases:

4.0", 4-1/2", 5.0" (F) NST inlet swivel or 4.0", 5.0", 6.0" storz inlet (must specify) x 2-1/2" (M) NST discharge.



APOLLO DUAL INLET MONITORS

Flows up to 1,250-gpm (4,800-lt/m) in the deck mode and 800-gpm (3,030-lt/m) in the portable mode.

Choice of ground bases:

Two x 2-1/2" (F) NST or 3.0" (F) NST swivel inlets (must specify) 2-1/2" (M) NST discharge.



LOW FLOW 911 OZZIE OSCILLATING MONITOR

- 2-1/2" (F) NST swivel inlet x 1-1/2" (M) NST discharge
- Various nozzle configurations
- Flows up to 375 gpm (1,420-lt/m)
- Sweeping range 30° either side of centre
- Height: 13-3/8", width: 23-3/4", length: 19-1/4", weight: 29 lbs. (13 kg)



www.alertdisastercontrol.com

ALERT (Asia) • ALERT (Canada) • ALERT (Middle East) • ALERT (Oceania) • ALERT (USA)

ALERT maintain an Integrated QHSE Management System to ISO 9001:2000, ISO 14001:2004 and OHSAS 18001 Standards as Certified by Det Norske Veritas

Portable Monitor

ALERT DISASTER CONTROL

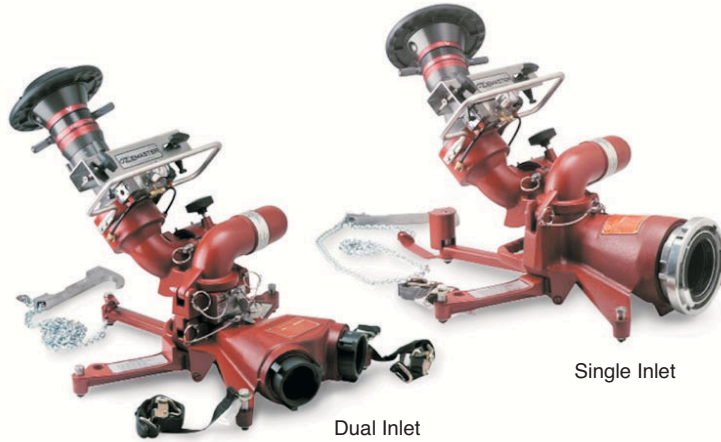
Global Emergency Response and Integrated Risk Management Solutions

Portable Monitor

APOLLO OzzieMaster™ OSILLATING MONITOR

The AKRON® Ozzie Liftoff has been designed for use with either version of the Apollo™ ground bases combining all the benefits of the 911 style Ozzie plus greater flow capabilities.

- Flows up to 1,000-gpm (3,800-lt/m) in single inlet ground base and direct mount. Flows up to 750-gpm (2,900-lt/m) with dual inlet ground base.
- 2-1/2" (M) NST discharge
- Sweeping range 25° either side of center
- Height: 13.0", width: 17-3/4", length 21.0", weight: 27-1/2 lbs. (12.4 kg) less ground base and nozzle



APOLLO PORTABLE MONITOR AND BASE COMBINATIONS

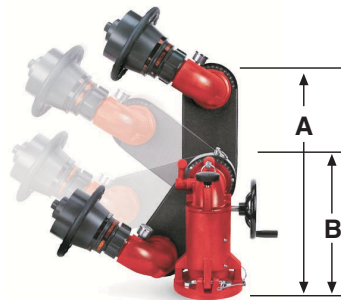


Apollo Portable Monitor



A = 27" Deployed

Apollo Hi-Rise Portable Monitor



B = 15 1/4" Stowed



Apollo Single Inlet Portable Monitor Base



Apollo Dual Inlet Portable Monitor Base



Apollo Fixed / Vehicle Deck Monitor Connection Flange

www.alertdisastercontrol.com

ALERT (Asia) • ALERT (Canada) • ALERT (Middle East) • ALERT (Oceania) • ALERT (USA)

ALERT maintain an Integrated QHSE Management System to ISO 9001:2000, ISO 14001:2004 and OHSAS 18001 Standards as Certified by Det Norske Veritas

ALERT DISASTER CONTROL

Global Emergency Response and Integrated Risk Management Solutions

Universal Monitor Support Flange for Pipe Extension Above the Deck

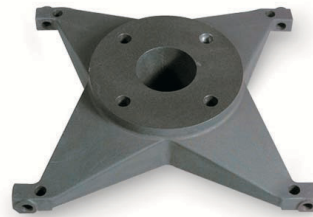
Universal Monitor Support Flanges are designed to make monitor installation easier while providing thread support needed to counteract reaction forces.

- For use with 3" NPT pipe extended above the deck
- Height: 6-11/16", weight: 8-1/4 lbs.



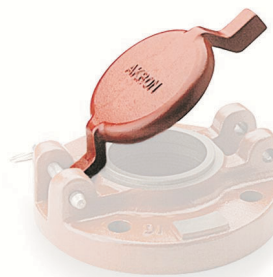
Universal Monitor Support Flange for Pipe Extension Through the Deck

- For use with 3" NPT pipe at or below deck level
- Height: 4-7/16", width: 14-1/2", weight: 11-1/2 lbs.



Direct Mount Cover

- Designed to prevent the Direct Mount Flange from collecting debris when left exposed.
- Weight: 5/8 lbs.



UPPER DECK

Designed to add 18.0" of additional height to the Apollo during deck operation. A simple and economical way to gain clearance over obstructions. Available with optional "unit mounted" indicator switch. The Upper Deck consists of two components: the extension pipe and the direct mount flange. Both can be ordered separately.

- Height: 19 1/4", weight: 10 lbs.



www.alertdisastercontrol.com

ALERT (Asia) • ALERT (Canada) • ALERT (Middle East) • ALERT (Oceania) • ALERT (USA)

ALERT maintain an Integrated QHSE Management System to ISO 9001:2000, ISO 14001:2004 and OHSAS 18001 Standards as Certified by Det Norske Veritas

ALERT DISASTER CONTROL

Global Emergency Response and Integrated Risk Management Solutions

Apollo Top Mount

- Easily mounts the Apollo on top of a vehicle for deck gun operation or storage on a vertical surface
- Size: 22.0" x 15-1/4", weight: 7-1/2 lbs.



Apollo Running Board Mount for Apollo Ground Base

- Conveniently store the Apollo ground base with folding legs in a standard apparatus compartment
- Length: 10.0", thickness: 2-1/2", weight: 1-5/8 lbs



www.alertdisastercontrol.com

ALERT (Asia) • ALERT (Canada) • ALERT (Middle East) • ALERT (Oceania) • ALERT (USA)

ALERT maintain an Integrated QHSE Management System to ISO 9001:2000, ISO 14001:2004 and OHSAS 18001 Standards as Certified by Det Norske Veritas